

Caution! Motor is hot after firing!  
Allow motor to cool before handling.

**FOR YOUR SAFETY ALWAYS WEAR EYE PROTECTION**  
**After Firing Cleanup**

When the motor has cooled, remove both retaining rings and the nozzle washer (wear eye protection).

Remove the bulkhead from the motor case and discard the primary O-ring and the smoke O-ring.

Using a wood stick, push the nozzle and liner tube out of the case.

Remove the nozzle O-ring and discard the liner and all of the O-rings in a proper receptacle.

Clean all motor parts with soap and water.

Before firing again, remove large deposits of slag from the nozzle face with a small screw driver. Small slag deposits can be ignored, but the nozzle throat hole must be clear. Slag often loosens on its own over several days.

Compare the two retaining rings and if their shape differs, replace both with new parts.

**Disposal**

In the unlikely event that a Loki Research reload kit needs to be disposed of due to damage or defects, it should be returned to Loki Research. Please contact Loki Research prior to shipment for instructions in this regard.

**Safety & First Aid**

Keep all reload kits away from sources of heat and flames and out of reach of children. When ignited, Loki Research propellant will burn slowly and will not explode. In case of accidental ignition, fight any fires with water. Foam and carbon dioxide are not effective against propellant fires. In the case of minor burns, apply first aid techniques and consult a physician. For more serious burns; immerse in cold water and seek immediate medical attention. Do not eat any part of a reload kit. In case of accidental ingestion, induce vomiting and call a physician immediately. Propellant consists mainly of ammonium perchlorate dispersed in a polyurethane synthetic rubber.

**Disclaimer**

Loki Research states that it has taken reasonable care in the design and manufacture of its products. However, as we cannot control the storage and use of our products, Loki Research cannot be held responsible for any personal injury or property damage resulting from storage, handling, or use of its products. Purchasers of Loki Research products hereby acknowledge this, and will hold Loki Research, LLC, its owners, employees, and subcontractors, blameless and harmless for any and all actions of the purchaser and user.

**Limited Warranty**

**What does this warranty cover?** We warrant each reload to be free from defects in material and workmanship. Our obligation under this warranty is limited to replacement or repair, at our discretion, of the reload and/or the Loki Research motor hardware only. Proof of purchase required.

**How long does the warranty last?** This warranty runs for one year from the date of original purchase.

**What does the warranty not cover?** This warranty does not cover defects or damage to airframes, vehicles, or other devices in which a rocket motor may be used, or to any support equipment they may require. This warranty does not cover defects or damage which result from abuse, misuse, negligence, or accidents. Also, consequential and incidental damages resulting from the use of this product or arising out of any breach of contract or breach of this warranty are not recoverable under this warranty. Some states do not allow the exclusion or limitation of incidental or consequential damages, so the above may not apply to you.

Loki Research, LLC  
843 Dekalb Dr  
Yardley, PA 19067  
www.lokiresearch.com

BORN ON:  
Made in USA

rev C. 03/16/08

**LOKI RESEARCH**  
**ROCKET MOTORS**  
**HIGH POWER RELOAD KIT**

This package contains one reload kit for use with  
Loki Research 54mm rocket motors or equivalent\*

\*see www.lokiresearch.com for hardware specifications

**K250**      **K960**  
Moonburner      BATES

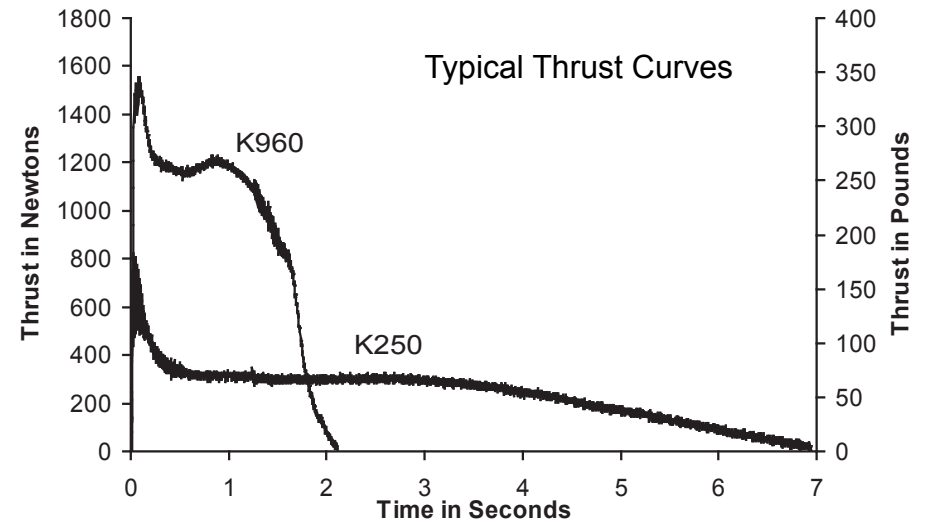
**Loki White propellant, white flame with white smoke**

**WARNING-FLAMMABLE:** Keep out of reach of children. Do not use near open flame. Not for sale to persons under 21 years of age. For use by certified High-Power users only.

Do not open until ready for use.

	Nozzle Size	Case Length	Total Impulse	Loaded Motor Weight	Propellant Weight	Delay Times (seconds)
<b>K250</b>	<b>#29 0.453"</b>	<b>19-3/8"</b>	<b>1700 N-sec</b>	<b>1800 g</b>	<b>950 g</b>	<b>XS S M L XL</b>
<b>K960</b>	<b>#29 0.453"</b>	<b>19-3/8"</b>	<b>1920 N-sec</b>	<b>1800 g</b>	<b>950 g</b>	<b>Smoke only</b>

Important! The correct nozzle must be used or motor failure may occur!  
Check the number engraved on the nozzle against this table.



## Before you begin:

Read the instructions completely and study the diagrams. Use the reload kit only in accordance with all instructions. Review the parts list and if any parts are missing or damaged, contact your Loki Research dealer for replacements. Note that in some reloads the liner tube is packaged separately from the other parts.

### Parts List:

#### Motor Hardware

motor case with thrust ring	1
graphite nozzle	1
forward bulkhead	1
nozzle washer	1
retaining rings	2

#### Reload Kit

Liner tube brown (or black for J175 and K250)	1
Propellant grain(s)	1 to 5
Primary O-rings (1/8" thick)	2
Smoke O-ring (3/32" thick)	1
Smoke element	1

### Required, but not supplied:

Internal retaining ring pliers.\*  
O-ring lubricant\*\*  
Electric motor igniter  
Protective Eyewear

\* we recommend "Knipex" brand retaining ring pliers. These may be purchased from [www.mcmaster.com](http://www.mcmaster.com), use part #5449A92.

\*\*Use petroleum jelly, synthetic automotive grease, or silicone based greases.

## Assembly Instructions

### FOR YOUR SAFETY ALWAYS WEAR EYE PROTECTION

1. Check that all hardware pieces are clean and free of grease and soot. In particular, check and clean the retaining ring grooves and the smoke grain cavity in the bulkhead.
2. Apply a light film of grease to the smoke grain O-ring (small, 3/32" thick) and install into the internal groove in the bulkhead.
3. Apply a **thick heavy coat of grease** to the forward end of the smoke element to inhibit burning (Fig. 1).
4. Loosen the thumb screw air valve. Place the smoke element on end, greased end up, on a flat surface. Push the bulkhead over the smoke element and press down until the end is flush with the bulkhead (Fig. 2).
5. Tighten the thumb screw air valve.
6. Coat the two primary O-rings (large, 1/8" thick) with grease. Install one Primary O-ring onto the bulkhead O-ring groove and one Primary O-ring onto the nozzle O-ring groove. Rub a light film of grease on the inside of each end of the motor case extending approximately one inch into the case.
7. Push the recessed shoulder of the nozzle into the liner tube and slide together (liner tube first) into the thrust ring end of the motor case (see diagram below). **Be sure to use the correct size nozzle** (see table on front page).
8. Place the stainless steel nozzle washer against the nozzle and install the retaining ring using appropriate retaining ring pliers. Always wear eye protection.
9. Stand the motor upright on the nozzle end and drop the propellant grain(s) into the liner tube. When loading the J175 and K250 moonburners, the slotted end of the grain goes against the nozzle. The slot assists igniter insertion.
10. Install the assembled bulkhead into the top of the motor and secure with the second retaining ring. There may be a small amount of empty space in the case and the grain(s) may rattle. This is normal.
11. Make a final visual inspection to ensure that both retaining rings are fully seated in their grooves. The motor can now be installed in the rocket. Use positive mechanical means to prevent the motor from being ejected during flight.
12. Install an electrical igniter only when at the launch pad. Slide the igniter through the nozzle all the way up until it touches the bulkhead or smoke element. Secure in place with tape or other means to prevent the igniter from sliding down.
13. Fire from a safe distance in accordance with NFPA code 1127 and the rules of your launch site. **CAUTION! Motor will be hot after firing!** Allow to cool before handling.

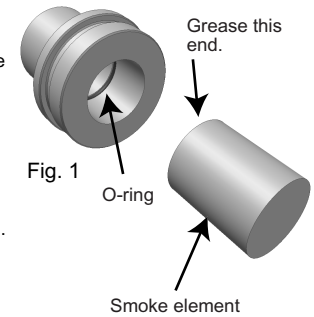


Fig. 1

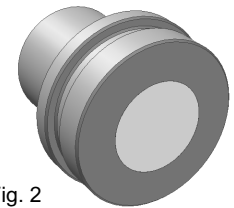


Fig. 2

